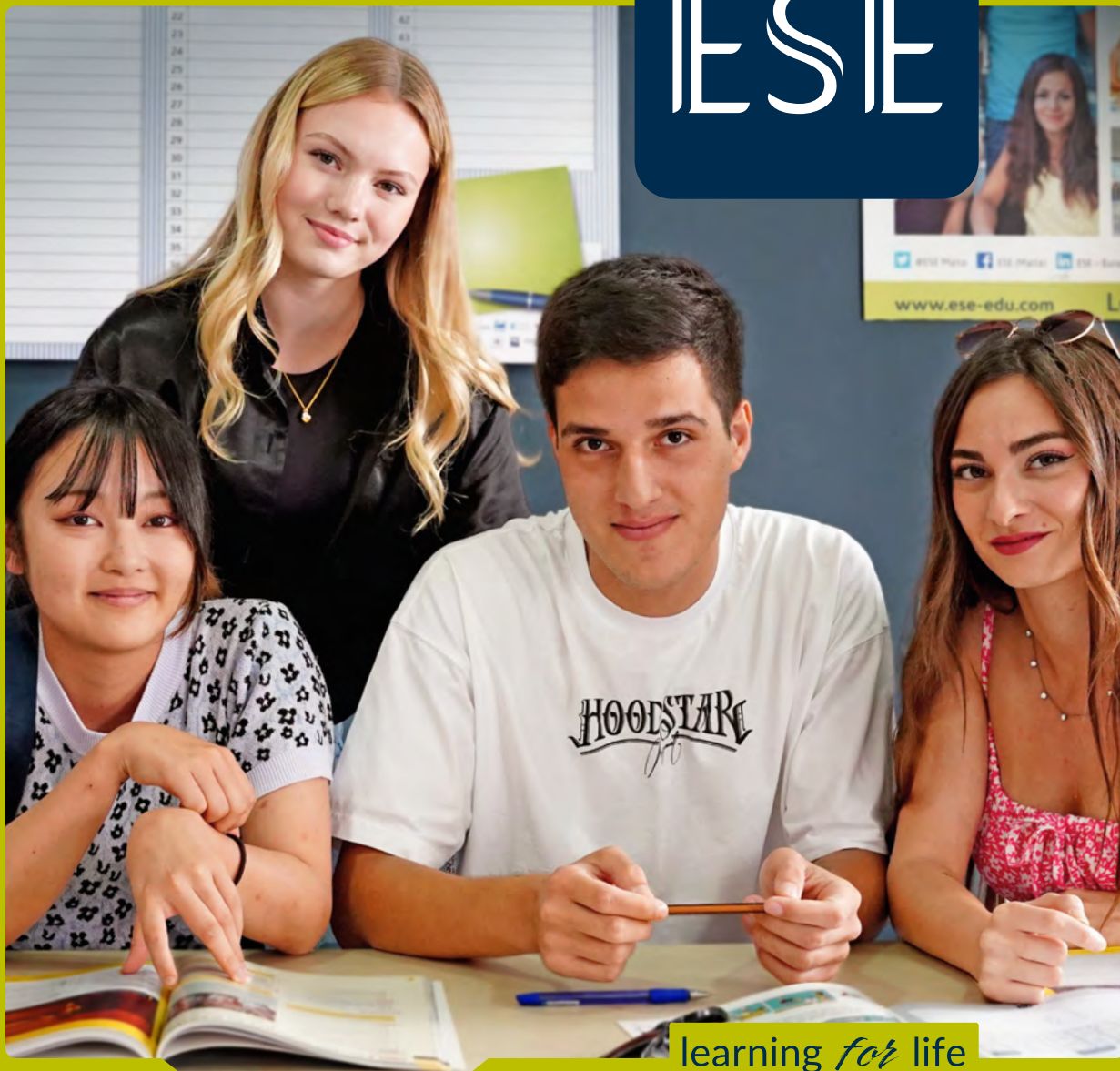


IESIE



learning *for* life

ADULT & ACADEMIC
PROGRAMMES *2024*





EUROPEAN SCHOOL OF ENGLISH



MEMBERS OF



Welcome

It is my pleasure to welcome you to ESE in the heart of beautiful Malta. As we step into 2024, I am thrilled to share our commitment to providing exceptional language education and a truly enriching experience.

At ESE, we believe that language learning goes beyond textbooks. It's about immersing yourself in a new culture, forging lifelong friendships, and gaining the confidence to communicate effectively in English. Our dedicated team of educators is here to guide you on this exciting journey, ensuring that every moment you spend with us is not just educational, but also enjoyable.

As you browse through this brochure, you'll discover the array of programmes we offer to cater to your unique needs and goals. Whether you're a beginner or looking to refine your language skills, we have a programme just for you.

I invite you to join us in 2024 and become a part of our global community of learners. Together, let's embrace the power of language and unlock a world of possibilities.

Wishing you an inspiring and successful year ahead.

Sean

Sean LeGault
Chief Executive Officer & Director
Claret Group



Our Mission

Our mission is to provide our multinational students with high quality English language courses which meet today's global needs.

ESE is committed to achieving this by continuously enhancing the standards of our services through ongoing innovations and development of our teaching methods, leisure and accommodation services.

We are dedicated to helping our students fulfil their personal, academic and professional goals whilst ensuring they enjoy their study travel experience with us.





Contents

Why Choose ESE?	8
ESE Academics	10
Your English Study Experience at ESE	12
ESE Academic Levels	13
Why Malta?	14
General English Courses	16
Other General English Courses	18
Exam Preparation Courses	20
Academic Courses	22
Business Courses	24
NILE Malta – Teacher Development Courses	25
Online Self-Study Courses	26
Work Placement	28
English for Specific Purposes	29
Accommodation	30
Social Programme	32
English in York	34



Why Choose ESE?



Location

St Julian's is a popular coastal town located on the northeast coast of the island of Malta in the Mediterranean Sea. It is known for its vibrant atmosphere, stunning waterfront, and a mix of entertainment and leisure options.



School Facilities

The classrooms in our main school in St Julians, and our annex school at Salini Resort, are fully-equipped, large, modern and bright.



Quality of Teaching

Learn from highly qualified and experienced teachers who employ proven teaching methodologies to help you achieve fluency and confidence in English. Our teachers follow regular Continuing Professional Development courses.



Wide Range of Courses

Whether you are choosing to study English for personal development, academic purposes or to further your career, we have the right course for you



Accommodation to Suit All Budgets

We offer a variety of accommodation options to suit your preferences and budget. From hotels to host families, student residences to self-catering apartments, there's something for everyone.



24/7 Welfare and Emergency Service

ESE Welfare support staff are available 24/7 to assist you during your stay with us at ESE.

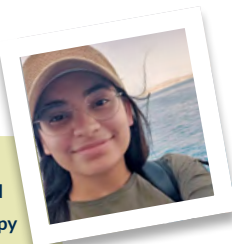


Multilingual Student and Staff Mix

At ESE, we take pride in fostering a rich and diverse multicultural environment that enriches the learning experience for both students and staff. Our team of educators and support staff comprises individuals fluent in a range of languages, ensuring effective communication and support for students from different parts of the world.

Karen Campos, Brazil

(General English)



"Studying at ESE was a huge step for me and I did it all by myself. I was happy that I found the best school to help me out!"



ESE e-Learning

Free access to our flexible e-Learning programme allows you to combine classroom based learning with on-line self-study from the moment you book until 3 months after the last day of your course.



Value for Money

ESE offers you the convenience of an all-inclusive package that includes your course, accommodation, arrival airport transfer, utility bills, certificate and the option to even book your flight to Malta.



Personalisation

And last but not least, the most important reason of all is that we take the time to get to know **you**, to make you feel at home and to make your stay at ESE as memorable as possible. At ESE, we really believe that **the little things matter!**



ESE Academics



Our Teachers

ESE teachers are friendly, experienced and well-qualified to give you all the support you need to learn English. Whatever your language level, you will follow your course at the right language level with the flexibility of changing to a more challenging or easier level if you find the course too easy or difficult.



Continuing Professional Development

Every year our teachers participate in Teacher Training courses as part of their Continuing Professional Development (CPD) and follow workshops in a range of EFL teaching areas to ensure that they are always up-to-date with teaching trends and technology so that you experience the highest standards of teaching.



Methodology

ESE teachers place you at the heart of teaching. Teachers develop their lessons to ensure that you are actively involved in your learning process and that you are given maximum opportunities for interaction. Small group activities and pair work mean that you have lots of time to practise your English in activities which have real communicative value.



ESE School

ESE is a large modern school with 60 bright and comfortable classrooms. All our classrooms are equipped with Smartboards and free Wi-Fi is available throughout the school. Students can make use of the computer lab and library where learning tools such as dictionaries, DVDs and graded readers are available.

ESE is an accredited Trinity examination centre for GESE (Graded Examinations in Spoken English) and ISE (Integrated Skills in English). ESE is an **accredited Trinity examination centre** for GESE.



NATIONAL
GEOGRAPHIC

LEARNING

Proud users of National Geographic Learning

National Geographic Learning has teamed up with National Geographic and TED to produce course books for adults and teenagers.

ESE has adopted these course books for their stunning visuals, their engaging content and their 'real-world' experience. Their renowned authors have written an integrated skills course to help students communicate effectively and have included exposure to and practice of the 21st Century Skills such as critical thinking and creativity skills.



What's included as part of your course?

- Placement test
- Welcome evening/meeting
- Course certificate
- ESE Personal Notebook
- ESE folder
- Free ESE eLearning Platform
- Academic guidance
- Free Wi-Fi at school
- Lots of tips on how to continue learning after your course is over.





"My time at ESE was awesome and I got to improve my English with the help of the amazing teachers there. Everyone is supportive and accommodating. Not only did I have a great time at the school, but Malta is a beautiful and breath-taking country that I would love to visit again!"

Liska Rathje,
Germany
(General English)



Your English Study Experience at ESE

follow these steps



Choose Your Course & Accommodation



Book Your Package / Flights / Insurance



Your Last Day & Departure

DON'T FORGET TO COLLECT YOUR CERTIFICATE ON YOUR LAST DAY



Do Your Placement Test

NOT LESS THAN
7 DAYS BEFORE
YOUR ARRIVAL DATE.

**Download
the Welcome Guide
and Other Pre-arrival
Information**

<https://ese-edu.com/downloads/>



Check Your Progress



Your First Day



Pack Your Bags

PREPARE YOUR TRAVEL DOCUMENTS.



Arrival

MEET WITH YOUR AIRPORT REPRESENTATIVE
AT THE ARRIVALS LOUNGE.



ESE Academic Levels

At ESE we use the Common European Framework of Reference for Languages (CEFR), which is an international standard for describing learners' language ability and skills.

ESE LEVELS	CEFR LEVELS	
Proficient User	C2	Can understand with ease virtually everything heard or read. Can summarise information from different spoken and written sources, reconstructing arguments and accounts in a coherent presentation. Can express him/herself spontaneously, very fluently and precisely, differentiating finer shades of meaning even in more complex situations.
	C1	Can understand a wide range of demanding, longer texts and recognise implicit meaning. Can express him/herself fluently and spontaneously without much obvious searching for expressions. Can use language flexibly and effectively for social, academic and professional purposes. Can produce clear, well-structured, detailed text on complex subjects, showing controlled use of organisational patterns, connectors and cohesive devices.
Independent User	B2	Can understand the main ideas of complex text on both concrete and abstract topics, including technical discussions in his/her field of specialisation. Can interact with a degree of fluency and spontaneity that makes regular interaction with native speakers quite possible without strain for either party. Can produce clear, detailed text on a wide range of subjects and explain a viewpoint on a topical issue giving the advantages and disadvantages of various options.
	B1+	Can understand factual information about common, everyday or job related matters and topics, identifying both general messages and specific details provided that speech is clearly articulated in a generally familiar accent. Can develop an argument well enough to be followed most of the time. Can produce more detailed connected text and explain main idea/s of text and speech around a range of familiar topics with reasonable precision.
	B1	Can understand the main points of clear standard input on familiar matters regularly encountered in work, school, leisure, etc. Can deal with most situations likely to arise whilst travelling in an area where the language is spoken. Can produce simple connected text on topics, which are familiar or of personal interest. Can describe experiences and events, dreams, hopes & ambitions and briefly give reasons and explanations for opinions and plans.
Basic User	A2	Can understand sentences and frequently used expressions related to areas of most immediate relevance (e.g. very basic personal and family information, shopping, local geography, employment). Can communicate in simple and routine tasks requiring a simple and direct exchange of information on familiar and routine matters. Can describe in simple terms aspects of his/her background, immediate environment and matters in areas of immediate need..
	A1	Can understand and use familiar everyday expressions and very basic phrases aimed at the satisfaction of needs of a concrete type. Can introduce him/herself and others and can ask and answer questions about personal details such as where he/she lives, people he/she knows and things he/she has. Can interact in a simple way provided the other person talks slowly and clearly and is prepared to help.
	STARTER	Can understand language at a very basic level around a range of very familiar topics. Can produce language at single word level in response to very basic questions on very familiar topics.

Why Malta?

Malta, with its rich history and stunning landscapes, offers the perfect backdrop for your language learning voyage. Our strategic location provides numerous opportunities to practice English in real-life situations, accelerating your progress and building your language skills organically.



Location

Malta is very easy to access even if you are travelling from outside Europe as it is well connected and within two hours of any major European Airport.



Historical Places

Malta has a long and rich history spanning over 7000 years – with temples that date back to before the ancient pyramids! Why not visit the capital city Valletta, a UNESCO World Heritage Site; Mdina, the ancient walled city with baroque architecture and Ġgantija, Haġar Qim and Mnajdra, the oldest temples in the world.



Weather

Malta enjoys a pleasant climate all year round, with short mild winters, long hot summers and over 300 days of sunshine – making it the perfect place to study at any time of the year.



Bilingual and Cosmopolitan Country

English is widely spoken by almost everyone on the island and is an official language in Malta. Malta is a real melting pot of different nationalities and cultures, with people from every corner of the globe, making Malta a truly cosmopolitan island.



English as a Foreign Language Destination

Malta has been welcoming foreign students to its shores for well over 50 years. With quality English teaching and a fully immersive experience, Malta remains a popular destination for students from all over the world.



Beautiful Beaches

Both sandy and rocky beaches can be found all over the island - Paradise Bay, Blue Lagoon (Comino), St Peter's Pool, Mellieha Bay, Golden Bay... just to mention a few! Dive into the crystal clear waters and take a swim or two! The water is warmest between May and October.



Safety

Malta boasts one of the lowest crime rates in Europe, making it a safe language study destination.



Adventure

Are you looking for an adrenaline rush? Why not join a sailing or diving course with our leisure team and go diving in seas renowned worldwide for their visibility. Gozo, Malta is the best diving destination in Europe, according to the 'European Best Destination' website.



Vibrant Nightlife

The fun doesn't stop when the sun goes down. Dance the night away at a hip nightclub in Paceville, Malta's entertainment hub. Sip cocktails in some of the island's trendiest bars. Or if you are looking for something quieter why not take a stroll along St Julian's Waterfront or enjoy a delicious meal overlooking the sea at one of the many restaurants dotted all over the island.



Inexpensive Public Transport

Students can get around the island easily and cheaply using public transport. There are many buses covering the island along with a ferry service between Sliema and Valletta and the three cities. Due to Malta's size, nowhere on the island is very far away. In fact, it doesn't take more than an hour to get from one tip of the island to the other!

General English Courses

General English

This course is for learners of English who would like to develop their overall level of English across the four core language skills: speaking, listening, reading and writing. Topics include everyday, real life situations to improve your grammar and expand your vocabulary in context, helping you to become more confident and fluent in English.

General English is a group course with the option to have 20 or 30 group lessons per week. The course can be taken short term (1-7 weeks) or over an extended period of time (8+ weeks) by booking Long-Term General English.

Intensive English

Students can also book the Intensive English option which combines a General English group course with one-to-one private tuition for more individual attention.

Long Term General English

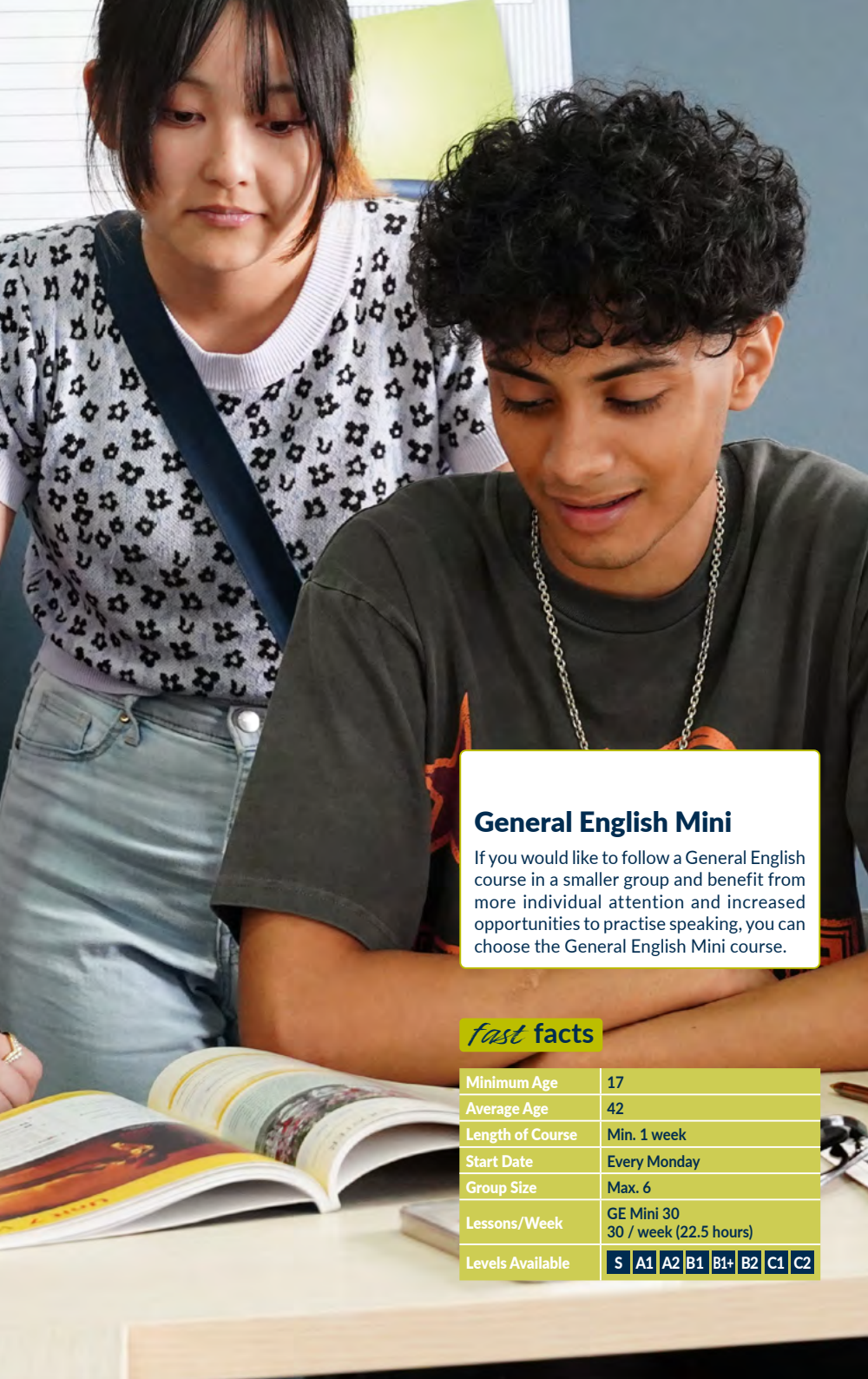
When following the Long-Term General English course, you will make significant improvement in your fluency and accuracy and become more confident when communicating in English with other non-native speakers. In addition, you will improve all your core language skills, broaden your vocabulary and work on your pronunciation.

The course is available for 8 weeks or more with the option of following 20 lessons (15 hours) or 30 lessons (22.5 hours) per week.

fast facts

Minimum Age	17
Average Age	28
Length of Course	Min. 1 week
Start Date	Every Monday
Group Size	Max. 12
Lessons/Week	GE 20 20 week (15 hours)
	GE 30 30/week (22.5 hours)
	Intensive 20 Group (15 hours) + 10 Individual (7.5 hours)
Levels Available	Long-term General English 20/week (15 hours) or 30/week (22.5 hours)
	S A1 A2 B1 B1+ B2 C1 C2





General English Mini

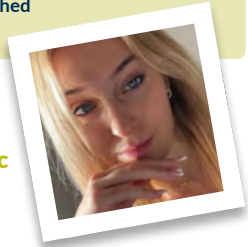
If you would like to follow a General English course in a smaller group and benefit from more individual attention and increased opportunities to practise speaking, you can choose the General English Mini course.

fast facts

Minimum Age	17
Average Age	42
Length of Course	Min. 1 week
Start Date	Every Monday
Group Size	Max. 6
Lessons/Week	GE Mini 30 30 / week (22.5 hours)
Levels Available	S A1 A2 B1 B1+ B2 C1 C2

"Coming from the Czech Republic with a B2 level of proficiency, I found the school to be an ideal place for language learning. The high-quality teaching exceeded my expectations, and I made remarkable progress during my stay. These three weeks at ESE have not only expanded my language skills but also left me with cherished memories."

**Ludmila
Uhríková,**
Czech Republic
(Young Adults)



Private Tuition

The content of a Private Tuition course is completely flexible and determined by your needs and your preferred learning style. Individual lessons will allow you to focus on achieving your specific learning needs and objectives. You will reach your goals faster and benefit from your teacher's individual attention and feedback. This course is ideal for anyone wanting to focus on an area of **English for Specific Purposes** (see page 29).

By successfully completing a Private Tuition course you will:

- Improve your fluency and accuracy faster;
- Develop the area of language you want to focus on.

fast facts

Minimum Age	17
Average Age	36
Length of Course	Flexible
Start Date	Every Monday or Flexible
Group Size	1 : 1
Lessons/Week	Flexible
Levels Available	S A1 A2 B1 B1+ B2 C1 C2

Other General English Courses

Are you looking for a General English course where you can study with students of a similar age to yourself?

ESE offers age-specific courses for Young Adults (17+), students who are in the 30+ age group and for more mature students who are over 50.

General English 30 for 30+

This course is designed for adults in the 30+ age group and is offered by ESE's sister school the **Executive Training Institute – ETI**, located within the ESE school building. Students following this programme can use the ETI lounge to socialise and you will be exposed to authentic materials and a variety of tools.

ETI is a member of Quality English and IALC.

fast facts

Minimum Age	30
Average Age	38
Length of Course	1–4 weeks
Start Date	Every Monday
Group Size	8
Lessons/Week	30 (22.5 hours)
Levels Available	A1 A2 B1 B1+ B2 C1 C2



fast facts

Dates	23.03.2024 – 02.11.2024
Minimum Age	17
Maximum Age	22
Length of Course	Min. 1 week
Lessons/Week	General English 20 (15 hours) or At a supplement: General English 30 (22.5 hours) or Intensive 20 Group (15 hours) + 10 Individual (7.5 hours)
Class Size	Max. 12
Welfare Support	24/7
Supervision	At school and all ESE activities
Residence	Number 11 Hotel St Julians (next door to ESE school) – 3-star on Half Board or Host Family – on Half Board
Levels Available	S A1 A2 B1 B1+ B2 C1 C2

Young Adults 17+

This course is designed for students in their late teens who want to follow a General English group course in the company of multinational students of a similar age group. When booking a Young Adult programme, students may choose the number of face-to-face hours of teaching in groups or individual one-to-one sessions. Students participating in this programme can follow a social programme with sports-based, cultural and/or leisure activities.



50+ Programme

The 50+ programme is offered five times a year and is designed for the more mature learners. It focuses on 'Everyday English' and the language you need in everyday real life situations. When booked on this course, you follow a varied social programme which includes guided excursions to sites of historical interest as well as social, cultural and leisure activities which give you the opportunity to get to know Malta's culture and traditions.

As a 50+ learner, you follow 20 lessons per week of 45 minutes each. Lessons are held every morning followed by specially-organised excursion/activity where you can practise your newly-learned vocabulary and language in a relaxed setting, helping you to become a more confident speaker of English.

fast facts

Minimum Age	50
Length of Course	2 weeks
Start Date	11.03.2024 / 08.04.2024 / 06.05.2024 / 09.09.2024 / 07.10.2024
Group Size	12
Lessons/Week	20 (15 hours)
Leisure Programme	Included in the package

Family Pack

The ESE Family Pack offers your family great flexibility. You can book a study holiday package for yourself and accompanying partner and your child/ren. Adults may follow one of our English language courses at **ESE** whilst the accompanying children between the ages 9-17 can join the Junior Camp or Teen Club programmes. For your accommodation you will stay at the 4-star **Salini Resort**.

During the week parents may also participate in a range of activities that we organise for adults while the accompanying children (9-17 years) will either participate in the Junior Camp or the Teen Club Social Programme from Monday to Friday.



fast facts

Dates Available	Easter: 23.03.2024 – 06.04.2024
	Summer: 18.05.2024 – 01.09.2024
	Autumn: 05.10.2024 – 02.11.2024
Length of Course	Min. 1 week

Adults

Entry Level	Starter +
Minimum Age	18
Lessons/Week	General English 20 (15 hours) (included in Family Pack) At a supplement, choice of: General English 30 / Intensive / Mini Class / Business English / Private Tuition or a course at our sister school ETI.
Class Size	Max. 12
Residence	Salini Resort – Salina Bay 4-star on HB Basis daily.

Teens & Juniors

Entry Level	Starter+
Minimum Age	9
Maximum Age	17
Lessons/Week	General English 20 (15 hours) included with all packages or at a supplement for students on Teen Club. General English 30 (22.5 hours) Intensive 20 Group (15 hours) + 10 individual lessons (7.5 hours)
Class Size	Max. 15
Residence	Salini Resort: Salina Bay – 4-star on FB Basis from Mon-Fri, and HB Basis on Sat & Sun for Juniors and Teens.

Exam Preparation Courses

ESE offers a wide range of exam preparation courses leading to internationally-recognised certification.

Each course includes Study Skills and exam-specific tutoring such as monitored exam practice and feedback, monthly tutorials and reviews and Students' Podium every Friday.



Cambridge Main Suite

PET, FCE, CAE, CPE – For improved work and study prospects.

Cambridge Main Suite exams are accepted by hundreds of universities and colleges around the world as proof of your English skills and are recognised by employers internationally as proof of your English proficiency.

You can prepare for any of the Cambridge range of exams (PET, FCE, CAE, and CPE) at ESE although the exam you sit for will depend on your level of English on entry. Exams are held three to four times a year.

fast facts

Minimum Age	17
Average Age	26
Length of Course	8 weeks
Start Dates	8–10 weeks before exam dates
Group Size	Max. 12
Lessons/Week	30 (22.5 hours)
Levels Available	Depending on which exam you apply for:
	PET – Min. B1
	FCE – Min. B2
	CAE – Min. C1
	CPE – Min. C2

IELTS

International English Language Testing System – For university admission or migration purposes.

If you want to pursue your studies at a university in the UK, Australia, Canada, New Zealand and The Netherlands, you will need a 5.5 band score

The General training IELTS option is intended for candidates who are seeking to migrate and may be required by students who intend to follow vocational or non-academic training.

IELTS Preparation is also available in York, UK. Visit www.english-in-york.co.uk/exam-preparation-courses

fast facts

Minimum Age	17
Average Age	22
Length of Course	Min. 4 weeks (B2 level required on entry) Min. 6 weeks (B1 level required on entry)
Start Dates	Every Monday
Group Size	Max. 12
Lessons/Week	30 (22.5 hours)
Levels Available	B1 B1+ B2 C1 C2



TOEFL iBT

Test of English as a Foreign Language administered via the internet
– Demonstrates your ability to use and understand English for academic purposes.

The TOEFL iBT tests your ability to use your core language skills – listening, speaking, reading and writing to perform academic tasks. It is popular with students who are planning to further their studies, with students who need certification to show proof of their English proficiency level and with students and workers applying for visas. It is widely accepted by tertiary institutions in Canada, New Zealand, Australia, UK, South Korea and Ireland.

fast facts

Minimum age	17
Average age	21
Length of course	Min. 4 weeks (B2 level required on entry) Min. 6 weeks (B1 level required on entry)
Start Dates	Every Monday
Group Size	Max. 12
Lessons/week	30 (22.5 hours)
Levels available	B1 B1+ B2 C1 C2



TOEIC

Test of English for International Communication –
For recruitment, admission or graduation purposes.

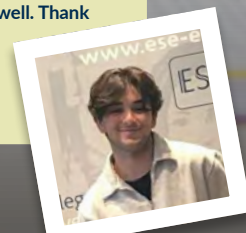
Recognised worldwide, the TOEIC test measures and certifies your level of English in an international business environment. The test comes in two forms – the Listening and Reading Test (2 hours) which is paper-based and the Speaking and Writing Test (1 hour 20 mins) which is computer-based.

The tests are widely accepted as an English proficiency test for recruitment purposes and by universities for admission or graduation purposes.

fast facts

Minimum age	17
Average age	22
Length of course	Min. 4 weeks (B2 level required on entry) Min. 6 weeks (B1 level required on entry)
Start Dates	Every Monday
Group Size	Max. 12
Lessons/week	30 (22.5 hours)
Levels available	B1 B1+ B2 C1 C2

"It was one of the best experiences in my life. My 3 months of learning English ended very well. Thank you for everything ESE Malta!"



Baris Yilmaz,
Türkiye

(General English)

Academic Courses

Academic Year Course

If you want to improve your overall level of English for a specific goal, such as career advancement or obtaining an English proficiency certificate, the Academic Year course gives you the flexibility of choosing your start date, your preferred area of focus (you can choose which of the specialist streams to follow every six weeks) as well as which exam preparation course to transfer to in the last 10 weeks of the AYC if you wish to obtain an internationally-recognised certificate.

fast facts

Minimum Age	17
Average Age	25
Length of Course	12 / 18 / 24 / 30 / 36 / 42 / 48 weeks
Start Dates	08.01.2024 / 19.02.2024 / 01.04.2024 / 13.05.2024 / 01.07.2024 / 12.08.2024 / 30.09.2024 / 11.11.2024 / 06.01.2025
Group Size	Max. 12
Lessons/Week	30 (22.5 hours)
Entry Level	Minimum entry levels apply for the AYC Academic and Work streams: Academic stream: Min. B1+ Work stream: Min. B1+ Streams are run with a minimum of 4 students per stream.
Levels Available	S A1 A2 B1 B1+ B2
AYC Semester Holidays	24.06.2024 – 28.06.2024 23.09.2024 – 27.09.2024 23.12.2024 – 03.01.2025

Academic Year Course Flexible Learning Pathway





Level 3 International Foundation

Diploma for Higher Education Studies in Business, Computing and Engineering

Level 3 International Foundation Diploma for Higher Education Studies (also referred to as International Foundation Year) is offered as a standard nine month or intensive six month programme, depending on your level of English proficiency on entry. Successful completion gives guaranteed entry onto a selection of university courses in the UK, US and Australia.

The Intensive Level 3 International Foundation Diploma for Higher Education Studies is a 6-month programme which consists of generic and Academic English language input at a more advanced level as well as core academic subjects such as Study and Communication skills, Culture Studies and Foundation Mathematics. You will then choose an additional two academic modules from the subjects being offered as listed.

The Standard Level 3 International Foundation Diploma for Higher Education Studies is a 9-month programme which consists of a range of English language courses necessary for future academic study combined with a set of subjects to improve study and communication skills, understanding culture and mathematics designed for learners of English as a foreign language intending to study abroad. You will then choose an additional two academic units depending on your subject areas of interest and what is being offered at ESE.

fast facts

Credits	120
Minimum Age	17
Average Age	18
Length of Course	9 months (Standard) 6 months (Intensive)
Start Dates	Standard Programme: September Start Date Intensive Programme: January Start Date
Group Size	Max. 12
Lessons/Week	30 (22.5 hours)
Entry Level	September (Standard Programme): IELTS 4.5 or equivalent January (Intensive Level): IELTS 5.5 or equivalent
Levels Available	B1 B1+ B2 C1 C2

Business Courses

Follow one of our Business courses to help you improve your English for Work or Career Advancement Purposes.

Business English

By following a Business English course, you will develop your English skills (reading, writing, speaking and listening) for career or work purposes. You will become more fluent and confident when speaking about business-related topics such as sales, human resources, manufacturing etc. You will benefit from practice in realistic scenarios such as meetings, interviews and other role plays.

You can follow this course in a **Business English** group course of 6 students or alternatively book a **Business English Intensive** which combines group sessions with individual lessons for faster improvement.

fast facts

Minimum Age	18
Average Age	30
Length of Course	Min. 1 week
Start Date	Every Monday
Group Size	Max. 6
Lessons/Week	BE 20: 20/week (15 hours) Intensive: 20 Group (15 hours) + 10 Individual (7.5 hours)
Levels Available	B1 B1+ B2 C1 C2

English for Work

This course is for learners of English who need to improve their level of English to find a job and work in an English-speaking work environment.

When following an English for Work course, you will become more fluent and confident in your use of English and you will expand your general and work related vocabulary and learn functional language for jobs.

The English for Work course is made up of 20 Group General English lessons and another 10 lessons which focus specifically on English for Work. Apart from improving your level of General English, you will learn language and key phrases to prepare for an interview, start a new job and get to know new colleagues. You will have plenty of opportunities to practise functional language in authentic workplace scenarios.

fast facts

Minimum Age	17
Average Age	25
Length of Course	Min. 1 week
Start Date	Every Monday
Group Size	Max. 12
Lessons/Week	GE 20: 20/week (15 hours) + English for Work: 10/week (7.5 hours)
Levels Available	A2 B1 B1+ B2 C1 C2



NILE Malta – Teacher Development Courses

CPD Courses for Teachers and Professionals Working in the Education Sector

ESE and fellow Eaquals member NILE have partnered to offer a series of face-to-face teacher CPD (Continuing Professional Development) programmes in Malta.

The one and two week training programmes address the needs of teachers and professionals working in the education sector.

The training programmes in Malta are delivered and overseen by NILE trainers who all have extensive experience of designing and delivering courses for teachers, as well as of teaching English.



Teacher Development Courses

NILE and ESE are providing an extensive range of face-to-face courses for teachers, trainers and language education professionals, covering all aspects of methodology and skills from primary and secondary education to trainer development. By following one of our courses, you can be assured of:

- Teaching of the highest quality by a team of experienced trainers, experts in their chosen fields of ELT
- Classes which are varied, practical and hands-on, but with reference to relevant theory
- A chance to meet, talk to and share experiences with participants from other countries
- Excellent resources and facilities in an attractive location in Malta
- Outstanding support: our academic and student welfare support teams are there to help you get the most out of your stay at ESE Malta
- A varied and interesting cultural and social programme in Malta
- NILE Malta teacher training courses are eligible for funding under Erasmus+. They have been designed around the main aims and objectives of the EU Lifelong Learning Programme.



Online Self-Study Courses

By booking one of our ESE eLearning courses, you can improve your English anywhere, and at any time, by accessing the e-learning platform on your phone, tablet or PC. Each course has around 150 hours of content and lasts 6 months. To book a course, go to <https://eseonlineshop.ese-edu.com/>

FROM
€200
FOR SIX
MONTHS



General English

This course covers grammar, vocabulary and pronunciation in everyday situations. It will help you build confidence to communicate easily and fluently. Minimum A2 level of English or better is recommended.

Modules Include

- EVERYDAY ENGLISH
- VOCABULARY BUILDERS
- GRAMMAR BUILDERS
- THEMED TOPICS
- VIDEO NEWS REPORTS



IELTS

The online IELTS course is ideal exam preparation. You will familiarise yourself with the IELTS Academic module exam format and learn exam skills to get better results in each of the 4 papers. Minimum B1 level of English or better is recommended.

Modules Include

- GETTING TO KNOW THE ACADEMIC IELTS
- STRATEGIES FOR IELTS
- IELTS PRACTICE LISTENING QUESTIONS
- IELTS PRACTICE READING QUESTIONS
- IELTS PRACTICE WRITING QUESTIONS
- IELTS PRACTICE SPEAKING QUESTIONS
- FAMILIAR TOPICS
- VERB TENSES
- GRAMMAR BUILDERS
- VIDEO REPORTS



TOEIC

If you are preparing for TOEIC, the online TOEIC course familiarises you with the TOEIC Reading and Listening exam formats. You will learn exam skills to get better results and benefit from two complete practice test opportunities. Minimum A2 level of English or better is recommended.

Modules Include

- INTRODUCTION TO THE TOEIC TEST
- TOEIC PREPARATION
- TOEIC QUESTION BANK
- TOEIC PRACTICE TESTS
- VERB TENSES
- GRAMMAR BUILDERS
- VIDEO NEWS REPORTS



"I had a great time at ESE language school for 6 months. I have had many valuable teachers and friends from all over the world. When I look back, I reflect on the memories I have accumulated. Hope to see everyone again!"

Şevket Salur,
Türkiye
(General English)



Business English

The online Business English course helps you develop language knowledge you need to be more effective in a business context. You will benefit from lessons on key professional communication skills including presenting, meetings, socialising, telephoning and business writing. Minimum A2 level of English or better is recommended.

Modules Include

MEETINGS
PRESENTING
DEALING WITH PEOPLE
TELEPHONING



Hospitality English

The online Hospitality English course is designed for people working in the hospitality sector. It covers functional language items which you will need in front and back of house and other areas of typical of the hospitality industry. Minimum A2 level of English or better is recommended.

Modules Include

FOOD AND DRINK
GIVING INFORMATION
ON THE PHONE
PROBLEMS AND COMPLAINTS
SAYING GOODBYE
WELCOMING CLIENTS
BUSINESS ENGLISH



Legal English

The online Legal English course helps lawyers and trainee lawyers broaden their legal vocabulary base and improve their language knowledge (grammar, vocabulary and pronunciation) and all round level of English proficiency. Minimum A2 level of English or better is recommended.

Modules Include

LEGAL SYSTEMS
CONTRACT LAW
INTELLECTUAL PROPERTY
IT AND CYBERCRIME
FAMILY LAW
TAXATION

Work Placement

An ESE work placement package gives you the opportunity to experience practical, work-based learning which is relevant to your area of study or interest. Our work placement supervisor will find the right work placement for you.



You start your stay in Malta with General English classes which will help you brush up your language skills. During this week you will also be introduced to your line manager at your place of work and shown how to find your way around Malta. Students staying four weeks only will have 4 days of lessons instead of 5.

As from the second week you will be expected to work for approximately 40 hours per week (according to your college or university's request). For stays longer than 8 weeks, more English classes will be offered.

Bookings must be received at least 14 weeks prior to your desired starting date and although most organisations prefer stays of 12 weeks and over, shorter stays will be considered upon request.

ESE's Work Placement Programme is open to bona fide students or recent graduates (not more than 12 months since graduation)

fast facts

Minimum Age	17
Average Age	19
Length of Course	Min. 4 weeks
Start Date	Throughout the year
Group Size	Max. 6
Lessons/Week	Depending on the duration of the work placement
Working Hours/Week	Approximately 40 hours
Entry Level	Minimum B1 Intermediate level of English

Study Areas

ADMINISTRATION
INFORMATION TECHNOLOGY
ARCHITECTURE
JOURNALISM
AUTO MECHANICS
LEGAL ASSISTANTS
BEAUTY THERAPY AND HAIRDRESSING
LEISURE
CHILDCARE & TEACHING ASSISTANTS
LOGISTICS
COACHING ASSISTANTS
IN VARIOUS SPORTIVE DISCIPLINES
MARKETING
MULTIMEDIA
DENTAL ASSISTANTS
NURSING
ELECTRICAL TECHNICAL ASSISTANTS
PHOTOGRAPHY
FINANCE
RETAIL
GRAPHIC & WEB DESIGN
SECRETARIAL DUTIES
HOSPITALITY & HOTEL MANAGEMENT
VETERINARY ASSISTANTS
INTERNATIONAL TRADE
WHOLESALE & DISTRIBUTION

Kindly contact us for other study areas





English for Specific Purposes

Are you looking for a professional English course in your specialist area or industry? ESE offers a number of English for Specific Purposes (ESP) courses which are customised to focus on the language and skills you need to work more effectively in your professional environment.

ETI is a member of Quality English and IALC.

fast facts

Minimum Age	24
Average Age	40
Length of Course	Min. 1 week
Start Date	Every Monday
Group Size	Depends on the course booked
Lessons/Week	Private Tuition: Flexible
	Closed Group: Flexible
Entry Level	Group: 15 hours over 5 training days
	We recommend that participants are a B1 minimum level but ESP followed in individual sessions can also be booked if you are at a lower level.
Levels Available	S A1 A2 B1 B1+ B2 C1 C2



Courses are offered in the following areas:

English for Finance and Banking

English for Human Resources

Aviation English

English for Purchasing

Business Communication

You may also be interested in following a Business Communication course. This course focuses on developing your professional communication skills – meetings, negotiations, telephoning, writing and networking. For more information visit **Executive Training Institute** in Malta www.etimalta.com or **York Associates** in York www.york-associates.co.uk.

Accommodation

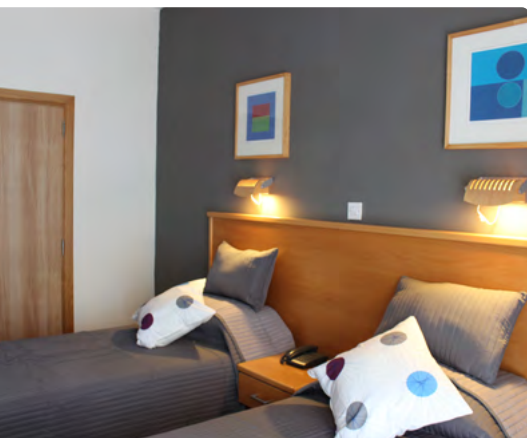
Your choice of accommodation is important for your happiness and well-being while you follow a course at ESE. We offer a variety of accommodation options to suit your preferences and budget ranging from in-house school residence to top of the range hotels.



Central Apartments



Astolat Apartments



ESE Residence



Valley View Apartments



Claret Apartments



ESE Residence (B&B)

Located in-house, **ESE Residence** combines convenience with the luxury of a hotel style stay. Facilities include 19 modern rooms with twin or double beds and ensuite bathrooms, TV, phone, free Wi-Fi and air conditioning. One room also offers wheelchair friendly/disabled access. Breakfast is included and is served at the ESE in-house cafeteria on the ground floor of the school. This accommodation is popular with more mature students staying for 1-3 weeks.



Host Family (Half Board)

Living with a host family means that you experience the Maltese way of life first-hand while enjoying the advantage of extra English practice in the most natural of settings – at home! Our host families are carefully selected by our staff to ensure that you will be hosted in a suitable, welcoming and comfortable environment. Most host families are located within walking distance of the ESE school premises. Breakfast and dinner are included as part of your package.



ESE Self-Catering Shared Apartments

If you want to share an apartment with other international language students like yourself and experience a sense of independence, you can choose single or sharing rooms in one of our ESE-run self-catering apartments: **Valley View** (Economy), **Medvista** (Economy), **Springfields House** (Economy), **Central** (Superior), **Astolat** (Superior) and **Claret** (Superior +). All apartments have air conditioning/heating and are well located within a comfortable walking distance from the school. Free Wi-Fi is available. A weekly maid service, water and electricity, Wi-Fi and linen change are also included.

Depending on your budget, you may choose to book one of our ESE-owned and run hotels. They are all located within a comfortable distance from ESE school and offer high standards of service. Hotel accommodation is ideal for students who would like to combine their study trip with a dose of relaxation away for their busy lives. Students staying in one of our hotels also benefit from the use of the amenities offered that guarantee a comfortable stay.



Salini Resort

The 4-star **Salini Resort** is located on the north coast of Malta just 10-15 minutes away by car or shuttle from the ESE main school. The Salini Resort boasts a vast range of facilities including 237 rooms with sea or countryside views, cafeteria, three restaurants, bar, large lounge and dining areas, a heated indoor pool with jacuzzi and steam room, two outdoor swimming pools, fitness room with the latest Technogym equipment, a tennis court and padel courts.

www.saliniresort.com



Salini Resort Studio Apartments

Our self-catering studio apartments at the Salini Resort are spacious, full of light, fully-functional and equipped with a Twin / Double room set up for 2 or 3 people and a private terrace with table and chairs. All rooms are equipped with a kitchenette, TV, Wi-Fi and are fully airconditioned. A complimentary shuttle bus service is available from the Salini Resort to ESE school in St Julian's.



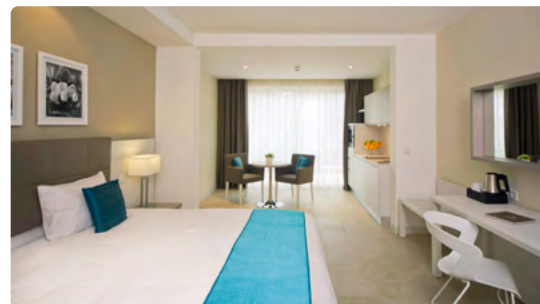
The George

The **George Urban Boutique Hotel** is a 4-star modern boutique hotel located just across the road from ESE school. It offers an indoor spa and beautiful roof top terrace with swimming pool and sea views. Rooms are equipped with an LCD TV, iPod docking station and mini-bar. Internet access is available in the lobby area. www.thegeorgemalta.com

thegeorgemalta.com



The George Urban Boutique Hotel



Salini Resort



Number 11 Hotel



Number 11

The **Number 11 Urban Hotel** is a 3-star superior hotel located right next door to the ESE main school building and offers a comfortable and affordable stay. Facilities include 93 rooms with a number of triple and quad rooms available, along with a roof top swimming pool, in-house restaurant, parking facilities and disabled access. www.number11.com

number11.com

Social Programme

When booking a course at ESE you also enjoy a memorable social experience with plenty of opportunities to practise English and interact with other language learners. Depending on the time of year, there is always something to do in Malta.

ESE offers a dynamic social and activity programme which varies from one week to the next. Our leisure team can guide you on what to do and see while in Malta with plenty of exciting activities to book each week. Here are just a few suggestions of some of the many activities you can experience during your study travel holiday with ESE in Malta:



Improve Your English

Practise your English with the locals. Enjoy a fully immersive experience with English as one of Malta's official languages – from ordering a coffee to buying your bus ticket, you will be speaking English on a daily basis both inside and outside of the classroom.



Events

Before you travel to Malta check out for events such as concerts, exhibitions, musicals and other festivals that will be on whilst here and book your tickets in advance to avoid disappointment.



Art and History

- Be inspired as you wander around art galleries.
- Admire Caravaggio's only signed painting 'The Beheading of St John the Baptist' at St John's Co-Cathedral.
- Visit the Maritime Museum.
- Visit the crafts village and watch craftsmen moulding beautiful Mdina glass, handcraft filigree and more.
- Marvel at some of the oldest temples in the world – Ġgantija, Haġar Qim and Mnajdra – dating from before the times of the ancient pyramids in Egypt!



Food Delights

- Taste the traditional cheesecakes (*pastizzi*) and Gozitan cheeselets (*ġbejniet*).
- Eat a typical Maltese rabbit-based meal (*fenkata*).
- **Ħobż biż-żejt**: a traditional Maltese sandwich made with crusty bread, olive oil, tomatoes, capers, olives, and a mix of tuna, onion, and garlic.



Shopping

- Visit the fish market in Marsaxlokk.
- 'Shop till you drop' at 'The Point' shopping mall in Sliema or Bay Street in St Julian's.



Boating and Diving

- Sail or take a cruise around the island's coastline.
- Take a boat trip to the Blue Lagoon in Comino.
- Go scuba diving in WW2 wrecks.
- Take a harbour cruise and experience the splendour of Valletta's Grand Harbour and the Three Cities.
- Take the ferry to Gozo and explore Malta's idyllic and tranquil sister island.



Sun Chasing

- Soak up the sun as you sip an iced latte and watch the world go by along the Sliema promenade.
- Laze at the ESE Beach Club while getting a suntan.
- Visit one of the many rocky and sandy beaches located all over the island, such as Golden Bay, Paradise Bay and Comino's stunning 'Blue Lagoon'.



Sightseeing

- View the impressive Grand Harbour from the Upper Barrakka Gardens.
- Admire the ornate interiors of 360 churches found around the island.
- Enjoy the many village festa fireworks which light up the summer skies.
- Visit the historical walled city of Mdina – Malta's 'silent city' and original capital city – with breathtaking views across Malta, (Game of Thrones season 1 was shot here)

English in York

Now you can combine two study destinations – ESE Malta and our sister school EiY in York, UK.

Why not combine a 12-week Academic Year course at ESE in sunny Malta with any number of weeks of General English at EiY in the charming, historical city of York, England?

About EiY

EiY is located in the heart of York, England. Founded in 1985, EiY offers a wide range of English language courses including General English and exam preparation courses to students aged 16 and over.

The school is housed in the beautiful 18th century Georgian 'Peasholme House', near Peasholme Green in York, England.



Peasholme House



Coffee lounge at Peasholme House

Accredited by the
BRITISH COUNCIL

ENGLISHUK
member

Quality
English





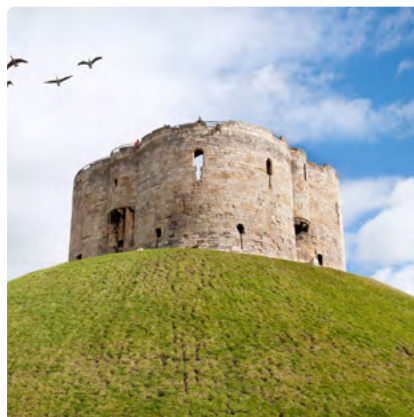
York Minster and Bar Walls



The River Ouse



Micklegate Bar



Clifford's Tower



About York

York is a charming, quintessentially British city bursting with history and lush green countryside. Situated in the North of England, York offers all the hustle and bustle of a large city along with rolling green hills and quaint, historical streets. The city of London is just a two-hour train ride away.

York was recently voted as the European Tourism City of the Year and is ranked second safest city in the UK with the Complete University Guide's 'How safe is your city?' York prides itself on its student population, attracting over 50,000 students from over 160 countries each year! Offering everything from museums and sites of historical interest, to a bustling nightlife, from bars, restaurants and shopping malls to wide open green spaces, York has it all and more!

For more information about our school, courses and accommodation in York, please visit

www.english-in-york.co.uk



TEEN & JUNIOR PROGRAMMES *2024*

ALSO AVAILABLE AT ESE



learning *for* life

Paceville Avenue St Julian's STJ3103 – Malta

+356 21373789 study@ese-edu.com www.esi-edu.com



MEMBER OF



CLARET GROUP

