



Teen & Junior Programmes

MALTA
2022

we are 



ESE TEAM





YEARS OF QUALITY TEACHING



Sean LeGault

Chief Executive Officer & Director
Claret Group

Welcome

The year 2022 marks the 25th anniversary since ESE welcomed the first students to our school in Malta. It is important for us to reflect on the past, and more importantly, to focus on the future.

We continue to remain committed to delivering exceptional English language programmes and we shall continue putting our strength together and setting high standards in everything that we do.

To us, it is vital that we treat all our students and partners with the highest dedication and responsibility.

We thank our team, clients and partners for the constant loyalty and support.

We look forward with optimism to the **next 25 years**.

Stay safe and we hope to see you soon again.

Sean

MEMBERS OF
CLARETGROUP



[BACK TO TOP >](#)

Contents

Our Mission	7
Why Choose ESE?	9
Why Malta?	11
ESE Academics	13
ESE Academic Levels	15
Junior Camp [10–13 years]	16
Teen Club [14–17 years]	17
Teen Host Family [13–17 years]	18
Young Adults [17–20 years]	19
Family Pack	20
Closed Groups	21
English with Sports	23
Social Programme	25
Accommodation	26



ESE SCHOOL ENTRANCE AT SALINI RESORT



ESE SCHOOL CLASSROOM AT SALINI RESORT



Our Mission

Our mission is to provide our multinational students with high quality English language courses which meet today's global needs.

ESE is committed to achieving this by continuously enhancing the standards of our services through ongoing innovations and development of our teaching methods, leisure and accommodation services.

We are dedicated to helping our students fulfil their personal, academic and professional goals whilst ensuring they enjoy their study travel experience with us.



Ryuki Natori

Japanese (Teen Club)

"ESE was full of fun classes and activities, and I had a meaningful time with people from other countries. Also, the staff were very easy to interact with, and I was able to spend time talking about various things."





Why Choose ESE?



Location

Our Teen and Junior residential programmes are managed from our 4-star Salini Resort which is owned and run by the Claret Group. The Salini Resort is 10 minutes away by car/bus from the main ESE school in St Julians.



School Facilities

The classrooms in our main school in St Julians, and our annex schools at Salini Resort and another alternative location, are fully-equipped, large, modern and bright.



Quality of Teaching

ESE has over 20 years of teaching experience to boast about. All our teachers are native speakers of English or native level proficiency and hold professional teaching qualifications. They also follow regular Continuing Professional Development courses.



Wide Range of Courses

Whether you are choosing to study English for personal development, academic purposes or to further your career, we have the right course for you.



Student Welfare

The well-being and welfare of our students is tantamount to everything we do at ESE. Our caring and dedicated staff become your child's family whilst they are away from home.



Accommodation

ESE offers Teen and Junior students the choice of staying at the superior 4 star **Salini Resort** or with one of our host families, whilst the Young Adult students (17+) will be staying at the 3-star **Number 11 Hotel** in St Julians or host families.



Accreditations

Our long list of accreditations, namely **EAQUALS, IALC, FELTOM, Quality English** and many others, is recognition of our commitment to quality, high standards and consistency across all the services we provide.



Safety

Our students' safety is of paramount importance. We provide supervised transport to school and all ESE-organised activities.



24/7 Emergency Service

Our welfare staff at Salini Resort and at the ESE main school are always ready to help any time of the day. Our emergency telephone number can be used 24/7 and first-aiders and paramedics are always present on site and on activities.



Multilingual Student and Staff Mix

At ESE we pride ourselves on being a truly international organization. We are a staff complement of over 18 different nationalities and between us we speak over 20 languages. We welcome students from all over the world.



Personalisation

And last but not least, the most important reason of all is that we take the time to get to know **you**, to make you feel at home and to make your stay at ESE as memorable as possible. At ESE, we really believe that **the little things matter!**



We follow COVID-19 Guidelines

ESE is committed to protect the well-being of our students and staff and to uphold all directives and protocols issued to regulate EFL schools by the relevant authorities.



GRAND HARBOUR



TYPICAL FISHING BOAT



FORT ST ANGELO



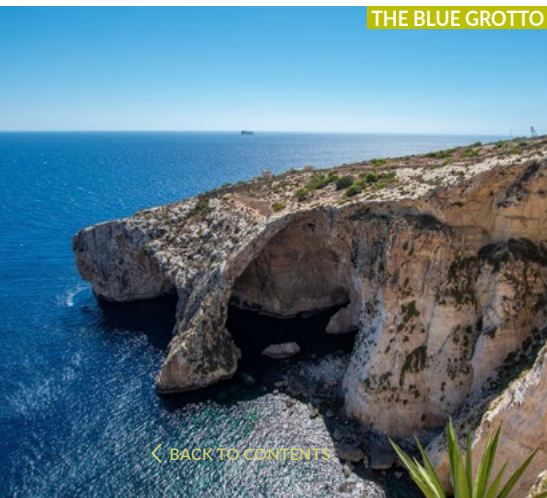
GOZO CITADEL



MDINA GATE



CLEAR BLUE WATERS OF COMINO



THE BLUE GROTTTO



GOLDEN BAY

Why Malta?

The island of Malta is jam-packed with things to do – from historical sites to sandy beaches, from traditional village festas to prime scuba diving sites. You will be spoilt for choice for what to do and see throughout the year.



Weather

Malta enjoys a pleasant climate all year round, with short mild winters, long hot summers and over 300 days of sunshine – making it the perfect place to study at any time of the year.



Beautiful Beaches

Both sandy and rocky beaches can be found all over the island – Paradise Bay, Blue Lagoon (Comino), St Peter's Pool, Mellieħa Bay, Golden Bay... just to mention a few! Dive into the crystal clear waters and take a swim or two! The water is warmest between May and October.



Historical Places

Malta has a long and rich history spanning over 7000 years – with temples that date back to before the ancient pyramids! Why not visit the capital city Valletta, a UNESCO World Heritage Site; Mdina, the ancient walled city with baroque architecture and Ġgantija, Haġar Qim and Mnajdra, the oldest temples in the world.



Inexpensive Public Transport

Students can get around the island easily and cheaply using public transport. There are many buses covering the island along with a ferry service between Sliema and Valletta and the three cities. Due to Malta's size, nowhere on the island is very far away. In fact, it doesn't take more than an hour to get from one tip of the island to the other!



English as a Foreign Language Destination

Malta has been welcoming foreign students to its shores for well over 50 years. With quality English teaching and a fully immersive experience, Malta remains a popular destination for students from all over the world.



Bilingual and Cosmopolitan Country

English is widely spoken by almost everyone on the island and is an official language in Malta. Malta is a real melting pot of different nationalities and cultures, with people from every corner of the globe, making Malta a truly cosmopolitan island.



Adventure

Are you looking for an adrenaline rush? Why not join a sailing or diving course with our leisure team and go diving in seas renowned worldwide for their visibility. Gozo, Malta is the best diving destination in Europe, according to the 'European Best Destination' website.



Safety

Malta boasts one of the lowest crime rates in Europe, making it a safe language study destination.

Davide

Italian
(Junior Camp 2 weeks)

"Salini Resort is fantastic! The rooms are really good and there is a football pitch where I played with my friends. There is a fantastic infinity pool and I swam there every day! The lessons are really cool and the teachers are really nice. We would study, do exercises and fun games in English. I also really liked the activities. This was one of the best experiences I've ever done and I hope to return to Malta because I really like the place!"





ESE Academics



Our Teachers

Our teachers are friendly, experienced and qualified to teach our students. They offer academic guidance and all the necessary support to our younger students to be able to become more confident and fluent speakers of English. Every year our teachers participate in Teacher Training courses and workshops as part of their Continuing Professional Development.



ESE School

During the peak summer months, our Junior and Teen students follow lessons at designated classrooms at the Salini Resort, ESE main school or the annex school. These schools boast modern classrooms which are bright and equipped to create a safe and stimulating learning environment.

During Spring, Autumn and Winter breaks, classrooms at Salini Resort or at the main ESE school are used. The main school is large and modern with over 60 classrooms (all equipped with Smart Boards), a computer lab, a library, a cafeteria and student lounge.



ESE Teaching Methodology

Our teachers use the learner-centred, communicative approach in the classroom which places the learner at the heart of learning. Activities are organised in small groups or pairs for maximum opportunity to interact with their multinational classmates.



Proud users of National Geographic Learning

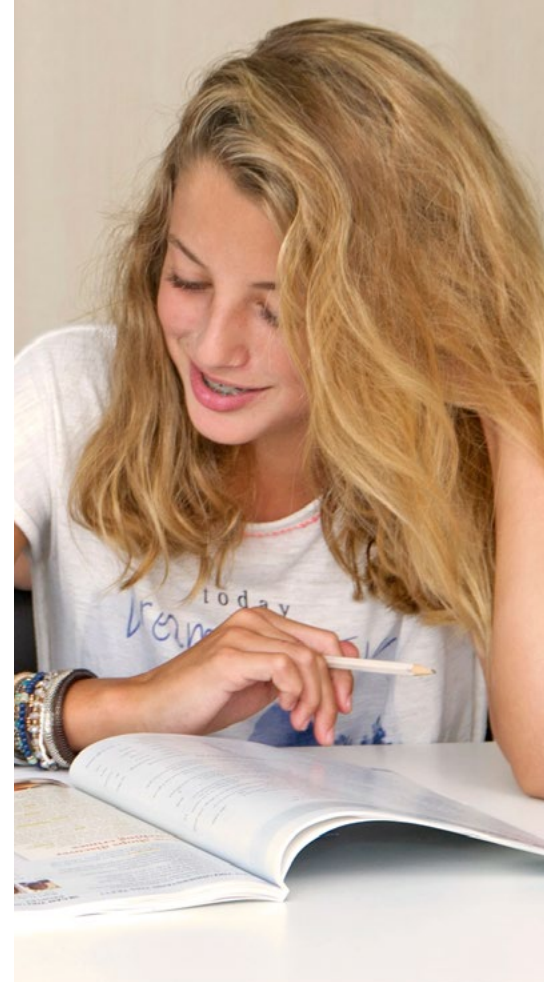
National Geographic Learning has teamed up with National Geographic and TED to produce course books for adults and teenagers.

ESE has decided to adopt these course books for their stunning visuals, their engaging content and their 'real-world' experience. Their renowned authors have written an integrated skills course to help students communicate effectively and have included exposure to and practice of the 21st Century Skills such as critical thinking and creativity skills.



Trinity Accredited Test Centre

ESE is an accredited Trinity examination centre for GESE (Graded Examinations in Spoken English) and ISE (Integrated Skills in English).



Tatyana

Mother of
13 year old Czech
(Junior Camp - 2 weeks)



"I would like to express my deepest gratitude to the fabulous team of young and well qualified personnel, for creating a warm feeling of belonging to a big international family of ESE. You have managed to encourage kids for developing not only football and English skills, but opening new horizons of their lives with valuable communication experience."



ESE Academic Levels

At ESE we use the Common European Framework of Reference for Languages (CEFR), which is an international standard for describing learners' language ability and skills.



ESE LEVELS	CEFR LEVELS	
PROFICIENT USER	C2	Can understand with ease virtually everything heard or read. Can summarise information from different spoken and written sources, reconstructing arguments and accounts in a coherent presentation. Can express him/herself spontaneously, very fluently and precisely, differentiating finer shades of meaning even in more complex situations.
	C1	Can understand a wide range of demanding, longer texts and recognise implicit meaning. Can express him/herself fluently and spontaneously without much obvious searching for expressions. Can use language flexibly and effectively for social, academic and professional purposes. Can produce clear, well-structured, detailed text on complex subjects, showing controlled use of organisational patterns, connectors and cohesive devices.
INDEPENDENT USER	B2	Can understand the main ideas of complex text on both concrete and abstract topics, including technical discussions in his/her field of specialisation. Can interact with a degree of fluency and spontaneity that makes regular interaction with native speakers quite possible without strain for either party. Can produce clear, detailed text on a wide range of subjects and explain a viewpoint on a topical issue giving the advantages and disadvantages of various options.
	B1+	Can understand factual information about common, everyday or job related matters and topics, identifying both general messages and specific details provided that speech is clearly articulated in a generally familiar accent. Can develop an argument well enough to be followed most of the time. Can produce more detailed connected text and explain main idea/s of text and speech around a range of familiar topics with reasonable precision.
	B1	Can understand the main points of clear standard input on familiar matters regularly encountered in work, school, leisure, etc. Can deal with most situations likely to arise whilst travelling in an area where the language is spoken. Can produce simple connected text on topics, which are familiar or of personal interest. Can describe experiences and events, dreams, hopes & ambitions and briefly give reasons and explanations for opinions and plans.
BASIC USER	A2	Can understand sentences and frequently used expressions related to areas of most immediate relevance (e.g. very basic personal and family information, shopping, local geography, employment). Can communicate in simple and routine tasks requiring a simple and direct exchange of information on familiar and routine matters. Can describe in simple terms aspects of his/her background, immediate environment and matters in areas of immediate need..
	A1	Can understand and use familiar everyday expressions and very basic phrases aimed at the satisfaction of needs of a concrete type. Can introduce him/herself and others and can ask and answer questions about personal details such as where he/she lives, people he/she knows and things he/she has. Can interact in a simple way provided the other person talks slowly and clearly and is prepared to help.
	STARTER	Can understand language at a very basic level around a range of very familiar topics. Can produce language at single word level in response to very basic questions on very familiar topics.

Junior Camp [10–13 years]

The Junior Camp programme is an all-inclusive package for students aged between 10–13 years old. This programme combines English lessons, a full leisure programme and accommodation at the 4 star Salini Resort on a full board basis. Airport transfers, return transport to and from all ESE organised activities and 24/7 welfare and support at school are also included.



Lessons

Students on this programme are grouped according to their English level. Lessons are topic based and focus on improving a student's general level of English and developing their core language skills (speaking, listening, reading and writing). Junior Camp classes cover topics popular with this age group and include problem-solving activities, role-plays, questionnaires, sharing experiences, and reading and listening activities.



Social Programme

Our Junior students also enjoy a fun packed activity programme with age-appropriate activities daily from Monday to Sunday. All ESE activities are supervised by our Group leaders. Popular activities include visiting the Splash and Fun park, a day trip to Comino and swimming at one of Malta's many sandy beaches.



FAST FACTS

Dates	Easter: 02.04.2022 – 30.04.2022 Summer: 28.05.2022 – 03.09.2022 Autumn: 08.10.2022 – 05.11.2022
Minimum age	10
Maximum age	13
Length of course	Min. 1 week
Lessons/week	General English 20 (15 hours)
Class size	Max. 15
Welfare support	24/7
Residence	Salini Resort (see page 26)
Meal plan	Full Board with hot lunch (Mon–Fri) and packed lunch on the weekend.
Social programme	Included (see page 25)
Levels available	A1 A2 B1 B1+ B2 C1

SAMPLE SCHOOL DAY*

07:30	WAKE UP CALL / SHOWERS
08:30	BREAKFAST
09:00	MORNING ACTIVITY
13:00	LUNCH AT SALINI RESORT
14:00	ENGLISH LESSONS
19:00	DINNER AT SALINI RESORT
20:00	EVENING ACTIVITY
23:00	LIGHTS OUT

*This is a sample timetable only. Lessons may take place in the morning or afternoon.

Teen Club [14–17 years]

The Teen Club programme is an all-inclusive package for 14-17 year olds. This programme combines English lessons, a full leisure programme and accommodation at the 4 star Salini Resort on a full board basis. Airport transfers, return transport to and from all ESE organised activities and 24/7 welfare and support at school are also included.



Lessons

Students following this programme improve their general level of English and develop their core language skills (speaking, listening, reading and writing). Students booked on this option may either follow General English classes in a multilingual group for 20 or 30 lessons per week or opt to take the Intensive option which combines 20 group lessons with 10 individual lessons. Classes are held either at the Salini Resort or at the annex school or at the ESE Main School in St Julians.



Social Programme

Teen Club students follow an activity programme appropriate for their age group. ESE-organised transport is provided to and from all activity venues and students are monitored by ESE group leaders. Activities run daily from Monday to Saturday with Sunday as a rest day. Students are expected and encouraged to join all the activities. However, students who opt to miss an activity and go out alone must return to Salini Resort by curfew time. Disciplinary rules apply.



FAST FACTS

Dates	Easter: 02.04.2022 – 30.04.2022 Summer: 28.05.2022 – 03.09.2022 Autumn: 08.10.2022 – 05.11.2022
Minimum age	14
Maximum age	17
Length of course	Min. 1 week
Lessons/week	General English 20 (15 hours) included in the package. At a supplement: General English 30 (22.5 hours) or Intensive (20 Group + 10 Individual)
Class size	Max. 15
Welfare support	24/7
Curfews apply	14 years old: Return to residence by 23:00 15 – 17 years old: Return to residence by midnight (Sunday to Thursday) & 01:00 (Fridays & Saturdays)
Residence	Salini Resort (see page 26)
Meal plan	Salini Resort: Full Board with hot lunch (Mon–Fri) and packed lunch on the weekend.
Social programme	Included (see page 25)
Levels available	A1 A2 B1 B1+ B2 C1

SAMPLE SCHOOL DAY*

07:30	WAKE UP CALL / SHOWER
08:30	BREAKFAST
10:00	ENGLISH LESSONS
13:30	LUNCH AT SALINI RESORT
14:30	AFTERNOON ACTIVITY
19:00	DINNER AT SALINI RESORT
20:00	EVENING ACTIVITY

*This is a sample timetable only. Lessons may take place in the morning or afternoon.

Teen Host Family [13–17 years]

The Teen Host family programme is an all-inclusive package for 13-17 year olds. This programme combines English lessons, a full leisure programme and accommodation with one of our host families on a full board basis (packed lunch). Airport transfers, return transport to and from all ESE organised activities and to school from the designated pick up points along 24/7 welfare and support at school are also included.



Host Family

Offering a home away from home, our host families are carefully selected to provide our Teen students with a comfortable, safe and welcoming environment. Staying with a host family gives students the opportunity to practise their English outside the classroom completely immersing themselves in the language. Host families are centrally located. **Refer to the fast facts on page 27.**



Lessons

Our Teens in Host Families can book General English 20 group lessons, General English 30 group lessons or the Intensive option made up of 20 group lessons and 10 one-to-one lessons per week. The latter option is recommended when preparing for a specific exam at home. Lessons can be either in the main ESE school in St. Julians or in one of ESE's annex schools.



SAMPLE WEEK SOCIAL PROGRAMME*			
	MORNING	AFTERNOON	EVENING
SUN	OPTIONAL ACTIVITY - GOZO		
MON	LESSONS	WELCOME MEETING (FOR ARRIVALS) OR POWER BOAT TO GOZO	WELCOME PARTY
TUE	LESSONS	BEACH CONCERT (MEAL INCLUDED)	
WED	LESSONS	VALLETTA WALKABOUT	INTERNATIONAL STUDENT PARTY
THU	LESSONS	BOWLING	MDINA BY NIGHT
FRI	LESSONS	COMINO ISLAND (MEAL INCLUDED)	
SAT	SANDY BEACH		KARTING

*This is a sample timetable only. Lessons may take place in the morning or afternoon.

FAST FACTS

Dates	Easter: 02.04.2022 – 30.04.2022 Summer: 28.05.2022 – 03.09.2022 Autumn: 08.10.2022 – 05.11.2022
Entry level	Starter+
Min. age	14
Length of course	Min. 1 week
Lessons/week	20 to 30 lessons per week (1 lesson x 45 mins)
Class size	Max. 15
Welfare support	24/7
Curfews apply	14 years old: Return to Host Family by 23:00 15 – 17 years old: Return to Host Family by midnight (Sunday to Thursday) & 01:00 (Fridays & Saturdays)
Residence	Host Family (see page 27)

Young Adults [17–20 years]

ESE's exciting Young Adult Programme is specifically designed for young adults from age 17 to 20 who are interested in improving their command of the English language in order to prepare for further study or for the world of work.



Lessons

When booking this programme, it is possible to choose the number of face-to-face teaching hours in a group and / or individual one-to-one sessions. You may either book General English 20 group lessons, General English 30 group lessons or the Intensive option made up of General English 20 group lessons and 10 one-to-one lessons per week.



Social Programme

Activities such as a Welcome Party, boat trips and cultural tours including transport are included in the package. A range of optional activities are also available for booking.

FAST FACTS

Dates	02.04.2022 - 05.11.2022
Minimum age	17
Maximum age	20
Length of course	Min. 1 week
Lessons/ week	General English 20 (15 hours) or At a supplement: General English 30 (22.5 hours) or Intensive 20 Group (15 hours) + 10 Individual (7.5 hours)
Class Size	Max. 12
Welfare Support	24/7
Supervision	At school and all ESE activities
Residence	Number 11 Hotel St Julians (next door to ESE school) - 3-star on Half Board or Host Family - on Half Board
Levels available	S A1 A2 B1 B1+ B2 C1 C2



Family Pack

The ESE Family Pack offers your family great flexibility. You can book a study holiday package for yourself and accompanying partner and your child/ren. Adults may follow one of our English language courses at **ESE** whilst the accompanying children between the ages 10-17 can join the Junior Camp or Teen Club programmes from Monday to Friday.

Your accommodation will be in our exclusive 4-star **Salini Resort**, Salina Bay.

During the week parents may also participate in a range of activities that we organise for adults while the accompanying children (10-17 years) will either participate in the Junior Camp or the Teens' Social Programme from Monday to Friday.



FAST FACTS

Dates available	Easter: 02.04.2022 - 30.04.2022 Summer: 28.05.2022 - 03.09.2022 Autumn: 08.10.2022 - 05.11.2022
Length of course	Min. 1 week

ADULTS

Entry level	Starter +
Minimum age	18
Lessons/week	General English 20 (15 hours) (included in Family Pack) At a supplement, choice of: General English 30 / Intensive / Mini Class / Business English / Private Tuition or a course at our sister school ETI.
Class Size	Max. 12
Residence	Salini Resort Salina Bay - 4-star on HB Basis.

TEENS AND JUNIORS

Entry level	Starter +
Minimum age	10
Maximum age	17
Lessons/week	General English 20 (15 hours) included with all packages or at a supplement for students on Teen Club. General English 30 (22.5 hours) Intensive 20 Group (15 hours) + 10 individual lessons (7.5 hours)
Class Size	Max. 15
Residence	Salini Resort Salina Bay - 4-star on FB Basis from Mon-Fri, and HB Basis on Sat & Sun for Juniors and Teens.

Closed Groups

ESE organises tailor-made courses and programmes for groups of students who share common language learning objectives. A syllabus and course materials are designed specifically to target our students' goals and leisure and social activities are selected according to the group's preferences.

Closed Groups can follow a General English programme or a specialist English work focus. ESE also offers exam preparation for **Trinity Graded Examinations** in Spoken English (GESE) and Integrated Skills in English (ISE). ESE is an accredited Trinity examination centre.

For closed groups in the low season, one accompanying teacher/group leader per 15 students is offered a complimentary General English course as well as free accommodation and leisure activities. Choose from fantastic accommodation options that include **Host Family, Number 11 Hotel** and **Salini Resort**.

FAST FACTS

Entry level	Starter +
Minimum age	10
Length of course	Min. 1 week
Lessons/ week	20 to 30 lessons per week as required (1 lesson = 45 minutes)
Supervision	At school and all ESE activities
Residence	3-star & 4-star Hotels, Host Family
Levels available	S A1 A2 B1 B1+ B2 C1 C2





English with Sports

Our English and Sports Programmes are designed for students who wish to improve their English as well as their specialist activity. Our camps are run by licensed sports coaches and experienced players who teach and demonstrate skills and who work on analytics so that participants can improve their techniques.

Participants have 20 lessons (15 hours) of General English spread over 5 days and a number of hours of the specialist activity chosen. They will also have some time dedicated for both cultural visits and fun-filled excursions.



Tennis [10-17 years]

Optional extra sporting activity

Personal tennis coaching sessions are available as an optional extra activity for students on the Junior Camp and Teen Club programmes. Tennis coaching sessions may be booked on an hourly basis with a professional coach at the **Salini Resort** tennis courts.



Diving

Minimum age 14 years

The clear blue Mediterranean waters surrounding the Maltese islands are renowned internationally for their visibility. The opportunity to dive in such crystal clear waters is a great opportunity for anyone who loves the sea.

PADI TWO WEEK OPEN WATER DIVING COURSE

 9 half days

The Open Water Diving Course gives complete beginner instructions on the basic skills needed to dive safely. The course consists of 5 Knowledge Development sessions in the classroom and 5 confined water dives in a pool or sheltered bay where your child can practise basic practical water skills. The confined water dives are followed up by 4 open water dives.

PADI ONE WEEK ADVANCED OPEN WATER DIVING COURSE

 5 half days

This course is an ideal follow-up to the beginners' course and a valid Open Water Certificate is necessary for your child to be able to enrol on this course. Your child experiences structured and supervised sessions to gain additional diving experience. The course includes 5 open water dives.

English with Diving courses include use of diving equipment, Certification card, a Crew Pack, including Go Dive Manual, RDP and booklet, PADI log book and PADI promotional materials.



[← BACK TO CONTENTS](#)

Social Programme

Junior Camp

SAMPLE SOCIAL PROGRAMME*			
	MORNING	AFTERNOON	EVENING
MON	VALLETTA + AUDIO & VISUAL SHOW	LESSONS	SUNSET BEACH GAMES
TUE	SPLASH & FUN WATER PARK	LESSONS	BOWLING
WED	AQUARIUM	LESSONS	SLIEMA WALK
THU	HARBOUR CRUISE	LESSONS	SPORTS NIGHT
FRI	POTTERY & CRAFTS VILLAGE	LESSONS	MDINA BY NIGHT
SAT	ESPLORA		TRADITIONAL FESTA NIGHT
SUN	PHOTO HUNT		GAMES AT SALINI RESORT

Teen Club/Host Family

SAMPLE SOCIAL PROGRAMME*			
	MORNING	AFTERNOON	EVENING
MON	LESSONS	WELCOME MEETING (FOR ARRIVALS) OR POOL GAMES	WELCOME PARTY
TUE	LESSONS	BEACH	BEACH VOLLEY / BBQ
WED	LESSONS	VALLETTA WALKABOUT	INTERNATIONAL STUDENT PARTY
THU	LESSONS	BOWLING	MDINA BY NIGHT
FRI	LESSONS	COMINO ISLAND (MEAL INCLUDED)	
SAT	ESPLORA		POOL PARTY
SUN	PHOTO HUNT		OPTIONAL ACTIVITY

*During our activities, we follow Covid-19 safety measures as per The Malta Public Health Act.



Accommodation



Junior Camp and Teen Club Residence

Students who are booked on a Junior Camp or Teen Club package stay at the 4-star Salini Resort which is owned and run by the Claret Group.

The **Salini Resort** is located in the north of Malta, at Salina Bay. Students sleep in fully air-conditioned 4-bedded rooms with sea or countryside views and have use of a 600 sq metre infinity pool, a tennis court (booking at the Reception is required), **Padel Court** (online booking is required), student lounge and relaxation area where free WiFi is available.

Junior Camp

FAST FACTS

Dates	Easter: 02.04.2022 – 30.04.2022 Summer: 28.05.2022 – 03.09.2022 Autumn: 08.10.2022 – 05.11.2022
Age Groups	Junior Camp: 10 – 13 years old
Rooms	Sharing rooms of max. 4 students, each room has one bathroom, wardrobe and a sharing safe deposit box.
Basis	Full Board serving Buffet breakfast, lunch and dinner. Packed lunch on Saturday and Sunday.
Welfare Support	24/7
Students following the Junior Camp are not allowed to leave the Resort unaccompanied by ESE staff.	

Teen Club

FAST FACTS

Dates	Easter: 02.04.2022 – 30.04.2022 Summer: 28.05.2022 – 03.09.2022 Autumn: 08.10.2022 – 05.11.2022
Age Groups	Teens 14 – 17 years old
Rooms	Sharing rooms of max. 4 students, each room has one bathroom, wardrobe and a sharing safe deposit box.
Basis	Full Board serving buffet breakfast, lunch and dinner. Packed lunch on Saturday and Sunday.
Welfare Support	24/7
Supervision	Classroom attendance monitored. Supervised ESE activities. Curfews apply: 14 years old: Return to residence by 23:00 15 – 17 years old: Return to residence by midnight (Sunday to Thursday) & 01:00 (Fridays & Saturdays)



Young Adult Accommodation

Young Adults can choose to stay either at the 3-star **Number 11 Hotel** in St Julians, which is a 91 bed roomed hotel ideally and conveniently located next door to the ESE main school or else with one of our carefully selected Host Families. Both accommodation options are on half board.

FAST FACTS

Dates	02.04.2022 – 05.11.2022
Age Groups	17–20 years old
Rooms	Shared room
Basis	Half board
Welfare Support	24/7
Supervision	At school and all ESE activities

SALINI RESORT BEDROOM



RESTAURANT AT SALINI RESORT





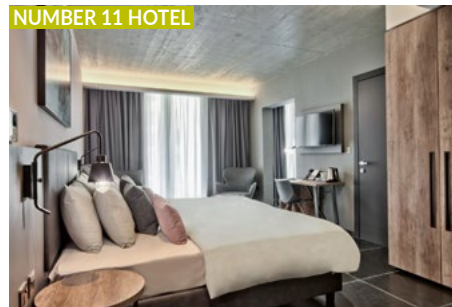
Host Family Accommodation

Living with a host family offers your child the opportunity to practise English outside the school in a safe family environment. Apart from being completely immersed in the English language and benefitting from out-of-class opportunities to learn English, your child will also experience living in a Maltese home and learn about Maltese culture, food and traditions first hand.

Our experienced accommodation services team are responsible for choosing host families who can provide your child with a welcoming and comfortable stay in Malta. Through the careful selection of ESE host families, we ensure that our teens are safe, comfortable and treated like a member of the family. ESE-organised transport is provided to/from school as well as the nearest pick-up point after activities.



HOST FAMILY



NUMBER 11 HOTEL



NUMBER 11 HOTEL

FAST FACTS

Dates	Easter: 02.04.2022 - 30.04.2022 Summer: 28.05.2022 - 03.09.2022 Autumn: 08.10.2022 - 05.11.2022
Age Groups	13 - 17 years old
Rooms	Shared Room (During High Season, a host family may host up to 4 students at a time)
Basis	Full board with packed lunch
Welfare Support	24/7
Supervision	Classroom attendance monitored. Supervised ESE activities. Curfews apply: 13-14 years old: Return to host family by 23:00 15-17 years old: Return to host family by midnight (Sunday to Thursday) & 01:00 (Fridays & Saturdays)

SALINI RESORT



[BACK TO CONTENTS](#) →



Teen & Junior Programmes MALTA 2022

Paceville Avenue
St Julian's STJ3103 – Malta
+356 21373789
study@ese-edu.com
www.ese-edu.com



MEMBER OF
CLARETGROUP
● ● ●



Learning for Life

